

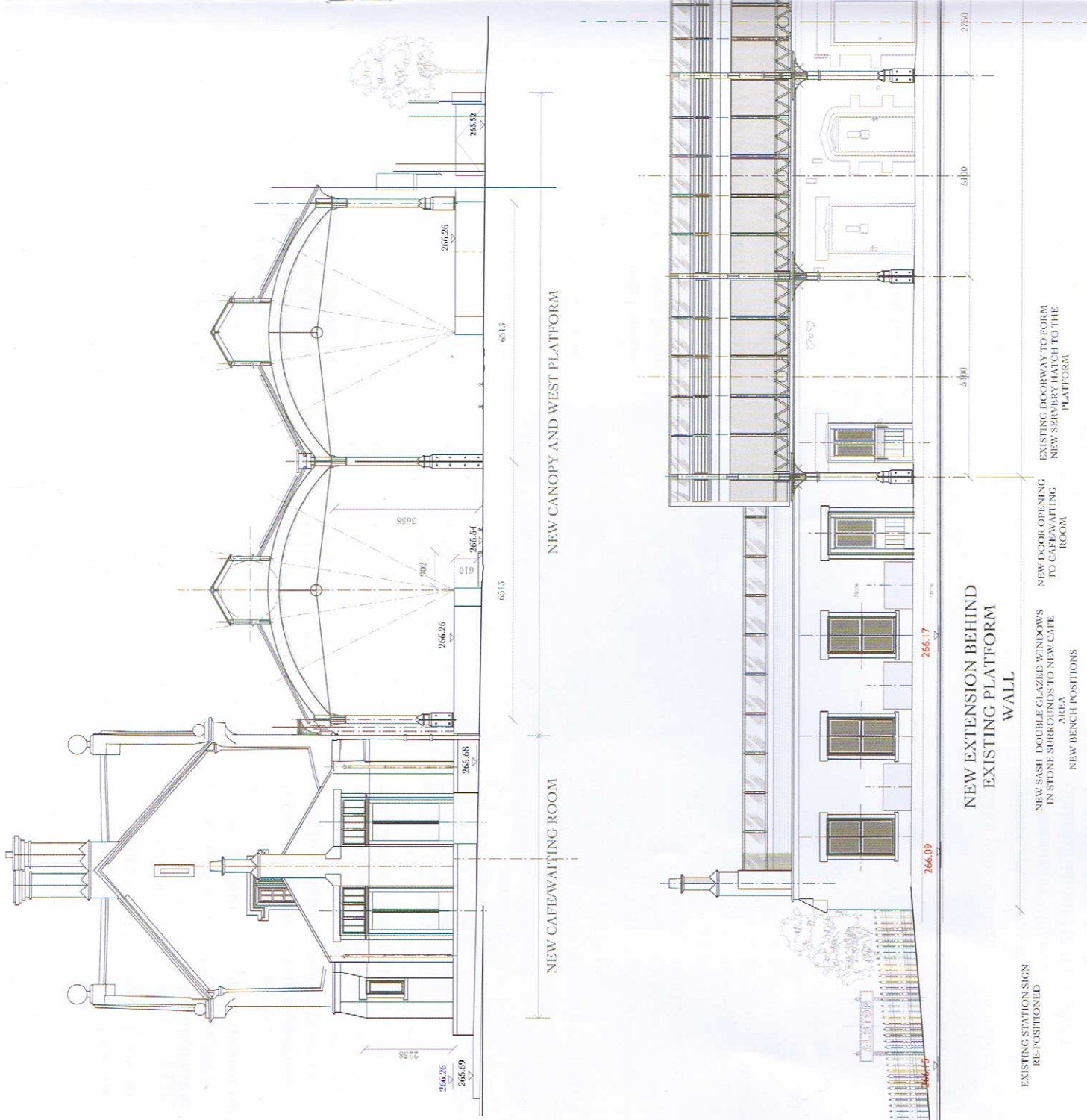
Fresh from the project planners !

Your first glimpse of the new layout and canopy at Alston and the new station at Slaggyford

Left and below: Alston Station

View from level crossing of the new two road canopy and second platform. The building on the left is the new cafe, built behind the existing retaining wall. The toilets remain centre left in the long view, with the cafe and outside seating area far left. The shop is in the same place, behind the bay window, but is now bigger as it takes in the old cafe on the right.

The canopy keeps the passengers dry, but puts the loco and crew out in the rain! The aim is to keep the soot away from the inside of the canopy.



Below: Slaggyford Station

The level crossing is the traditional gated type. The car and coach park is through the level crossing and on the left. The signal box is a copy of the original. The existing station building preserved by members, will be restored, and a matching additional toilet block added. A water tower is added on the end of the platform.

